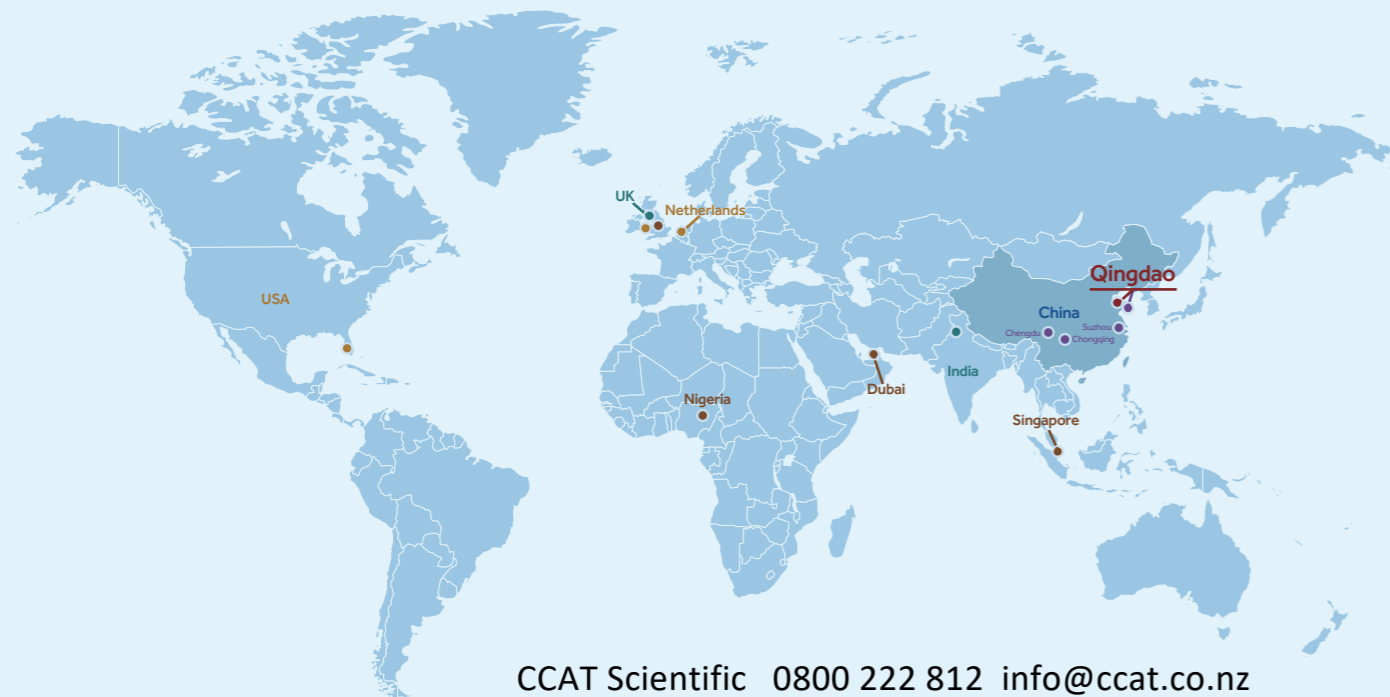


# Biomedical Freezer Solutions

-60°C | -40°C | -30°C | -25°C



CCAT Scientific 0800 222 812 info@ccat.co.nz

● Headquarter ● Global warehouse ● Training center ● Global subsidiary ● Manufacturing base

## Qingdao Haier Biomedical Co.,Ltd.

No.280 Feng Yuan Road, High-tech Zone,  
Qingdao, 266109, P.R. China  
Tel: +86-0532-88935593  
Website: www.haiermedical.com



Haier Biomedical  
International



Haier Biomedical  
International



@haiermedicalint



Haier Biomedical  
International



Haier Biomedical  
International

Note: If a slight difference occurs between pictures and actual products, please refer to actual products. Our company reserves the right of final interpretation of this brochure, please contact us for any further information if required.



# CONTENT

## Biomedical Freezer

- -60°C Biomedical Freezer ..... 03
- -40°C Biomedical Freezer ..... 05
- -30°C Biomedical Freezer ..... 21
- -25°C Biomedical Freezer ..... 39



# -60°C Biomedical Freezer

# -60°C Biomedical Freezer

A versatile low-temperature freezer installed in hospitals, blood stations, diseases control & prevention centers, research institutions, bioscience laboratories and medical laboratories. It is suitable for storing a wide variety of biological products including viruses, bacteria, red blood cells, white blood cells, skin, bone and semen as well as ocean-going supplies and electronic devices. It can also provide a low-temperature environment for testing of special materials.

The secondary application is for the storage of fishery products such as tuna, Australian lobster, salmon, South American shrimps, Argentina red shrimp, top-quality beef, kanpachi, octopus, yellowtail, bonito fish, grouper, and fugu rubripes. This is a requirement for fishery products for human consumption and hence these freezers are popular among professional oceanic fisherman, seafood distributors, speciality seafood stores and sushi restaurants and commercial food manufacturers.

Single compressor auto cascade refrigeration system provides high efficient cooling power. 100m Insulation ensure optimal thermal protection and energy efficiency.



Dual seal design retains cold and reduces condensation.



304 stainless steel is suitable for both laboratory and is certified food safe for commercial kitchen environments.



Key lock product protection and lockable casters for ease of moving and safe installation.



An easy to use, waterproof digital controller



DW-60W258



German Made Energy Efficient Compressor



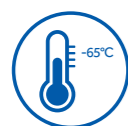
Digital Temperature Control display



Dual-seal Design



Efficient and Reliable Fan



Quickly freeze sea food products to retain their original taste, structure and freshness.



Low noise output, noise cancelling technology yields a smoother operation and a sound level of less than 43dB(A).

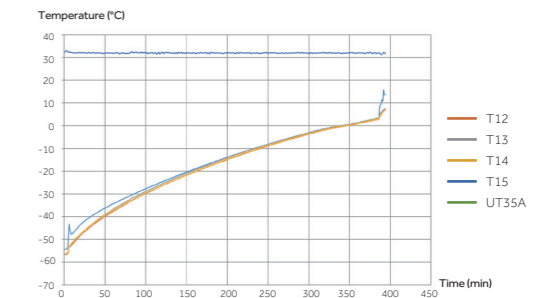
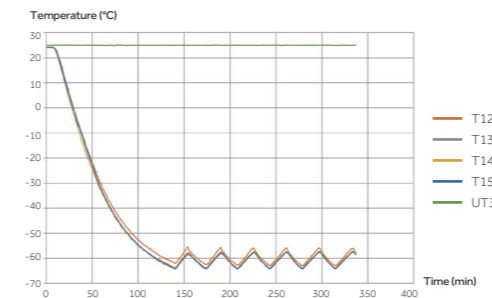


Multiple alarm system includes temperature alarm, and sensor error alarm.



HC refrigerant system is optimized to improve refrigeration efficiency by 30%, and save energy by about 50%.

## Temperature Curve



## Specifications

	Model	DW-60W138	DW-60W258	DW-60W388	
Technical Data	Cabinet Type	Chest	Chest	Chest	
	Climate Class	N	N	N	
	Cooling Type	Direct Cooling	Direct Cooling	Direct Cooling	
	Refrigerant	HC	HC	HC	
	Sound Level ((dB(A))	43	43	43	
Performance	Cooling Performance (°C)	-60	-60	-60	
	Temperature Range (°C)	-30~-60	-30~-60	-30~-60	
Control	Controller	Microprocessor	Microprocessor	Microprocessor	
	Display	LED	LED	LED	
Electrical Data	Power Supply (V/Hz)	220-240/50	220-240/50	220-240/50	
	Power (W)	370	410	420	
	Electrical Current (A)	3	3	3.5	
	Power Consumption (kWh/24h)	4.5	5.5	6.5	
Construction	Capacity (L/Cu.Ft)	138/4.9	258/9.1	388/13.7	
	Net/Gross Weight (approx)	kg	62/75	88/108	105/130
		lbs	137/165	194/238	232/287
	Interior Dimensions (W*D*H)	mm	580*445*620	1000*445*620	1450*445*620
		in	22.8*17.5*24.4	39.4*17.5*24.4	57.1*17.5*24.4
	Exterior Dimensions (W*D*H)	mm	790*770*950	1210*770*950	1655*770*950
in		31.1*30.3*37.4	47.6*30.3*37.4	65.2*30.3*37.4	
Packing Dimensions (W*D*H)	mm	815*800*990	1255*800*990	1695*800*990	
	in	32.1*31.5*39	49.4*31.5*39	66.7*31.5*39	
Loading Quantities	Container Load (20'/40'/40'H)	28/56/56	22/46/46	14/28/28	
Alarms	High/Low Temp	Y	Y	Y	
	Sensor Error	Y	Y	Y	
Accessories	Caster	Y	Y	Y	
	Porthole	Y	Y	Y	
Certification	CE	Y	Y	Y	

## -40°C Biomedical Freezer (Chest)

This product is designed to store vaccines, blood plasma and many other biological materials. Suitable for scientific research institutes, blood stations, hospitals, centers for disease control and prevention, and material science, electronics and chemical laboratories.

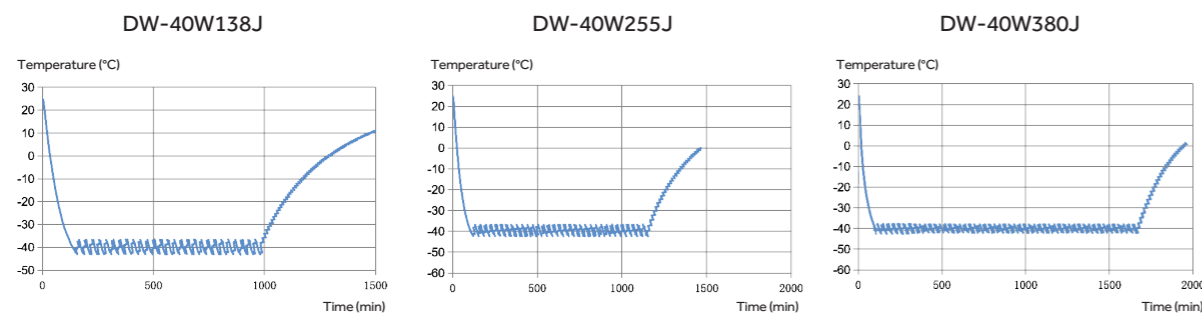


DW-40W138J/255J/380J

### Scope of Application:

- Temperature Control**
  - Microcomputer control, digital temperature display, display precision is 0.1°C. Adjustable temperature set point -20°C--40°C
  - User settable temperature alarms
- Safety System**
  - Multiple alarms: high/low temperature alarm/sensor error alarm/power failure alarm. Optional high ambient warning and remote alarm contacts
  - Battery backed-up alarm will alert for more than 24 hours in case of power failure
  - Equipped with overcurrent protector for safety
- Refrigeration System**
  - Durable, market-leading brand compressors and EBM condensing fan ensure a high refrigeration efficiency and maximizes temperature performance
  - High density insulation layer delivers superior insulation performance
  - Evaporator and condenser design delivers excellent refrigeration efficiencies
  - Non-toxic, environmentally-friendly hydrocarbon refrigerants

### Temperature Curve



## -40°C Biomedical Freezer (Chest)

### Specifications

Model	DW-40W138J	DW-40W255J	DW-40W380J		
Technical Data	Cabinet Type	Chest	Chest	Chest	
	Climate Class	SN N	SN N	SN N	
	Cooling Type	Direct Cooling	Direct Cooling	Direct Cooling	
	Defrost Mode	Manual	Manual	Manual	
	Refrigerant	HC	HC	HC	
	Sound Level (dB(A))	42	42	42	
Performance	Cooling Performance (°C)	-40	-40	-40	
	Temperature Range (°C)	-20--40	-20--40	-20--40	
Control	Controller	Microprocessor	Microprocessor	Microprocessor	
	Display	LCD	LCD	LCD	
Electrical Data	Power Supply (V/Hz)	220~240/50	220~240/50	220~240/50	
	Power (W)	260	370	450	
	Electrical Current (A)	2.3	3.1	2.9	
Dimensions	Capacity (L/Cu.Ft)	138/3.9	255/9.0	380/13.4	
	Net/Gross Weight (approx)	kg	52/65	76/96	90/115
		lbs	114.6/143.3	167.5/211.6	198.4/253.5
	Interior Dimensions (W*D*H)	mm	580*445*620	1000*445*620	1450*445*620
		in	22.8*17.5*24.4	39.4*17.5*24.4	57.1*17.5*24.4
	Exterior Dimensions (W*D*H)	mm	790*770*950	1210*770*950	1655*770*950
		in	31.1*30.3*37.4	47.6*30.3*37.4	65.2*30.3*37.4
	Packing Dimensions (W*D*H)	mm	815*800*990	1255*800*990	1695*800*990
in		32.1*31.5*39	49.4*31.5*39	66.7*31.5*39	
Container Load (20/40/40'H)	28/56/56	22/46/46	14/28/28		
Alarms	High/Low Temperature	Y	Y	Y	
	Remote Alarm	Optional	Optional	Optional	
	Power Failure	Y	Y	Y	
	Sensor Error	Y	Y	Y	
	High Ambient Temperature	Optional	Optional	Optional	
Accessories	Caster	Y	Y	Y	
	Porthole	Y	Y	Y	
	USB Interface/RS485	Optional (USB or RS485, either-or)	Optional (USB or RS485, either-or)	Optional (USB or RS485, either-or)	
Others	Certificate	CE	CE	CE	

\*Haier Biomedical reserves the right to change products and specifications without prior notice.

## -40°C Biomedical Freezer (Upright)

### Key Features

- Microprocessor control, adjustable temperature range :-20°C to -40°C
- LED digital display and increment at 0.1°C
- Permanently lubricated cooling fan for safety and longevity
- Rapid cooling with shelf evaporator
- Removable double outer door seal design

### Ergonomic Design

- USB data logging and temperature recorder (optional)
- Padlock for safe storage
- Drawers are designed with label holders for item identification

### Safety

- Multiple alarms include high/low temperature, sensor error, power failure, high ambient temperature, low battery, door ajar
- Alarm Types: buzzer, flashing light, remote alarm



Reliable Performance



USB



Alarms



Double Outer Door Seal



DW-40L278



Padlock



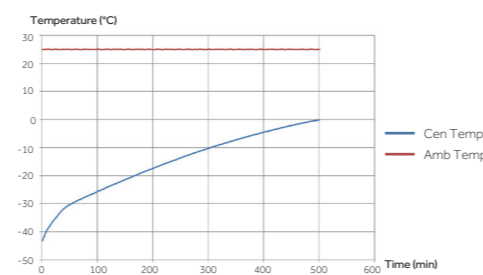
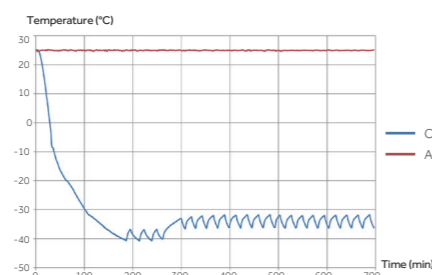
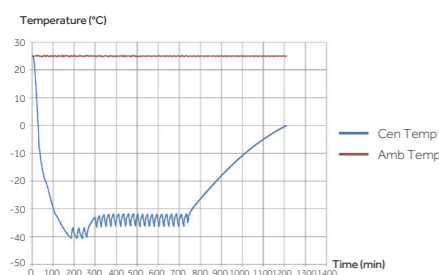
Caster and Feet



Removable Double Outer Door Seal

### Temperature Curve

DW-40L278



## -40°C Biomedical Freezer (Upright)

Suitable for the storage of plasma, biological material, reagents and other essential items. Used within hospitals, disease prevention, academia and commercial laboratories.

### Scope of Application:



#### HC Energy-saving

High efficiency hydrocarbon compressor and refrigeration technology for a lower energy consumption



#### Superior Uniformity

With the optimized system design, the temperature uniformity of the characteristic point is  $\pm 3^\circ\text{C}$ , and the uniformity of the whole temperature zone is controlled within  $\pm 5^\circ\text{C}$



#### Environmental Protection

Hydrocarbon refrigerant, LBA foam polyurethane insulation layer



#### Adjustable Shelves

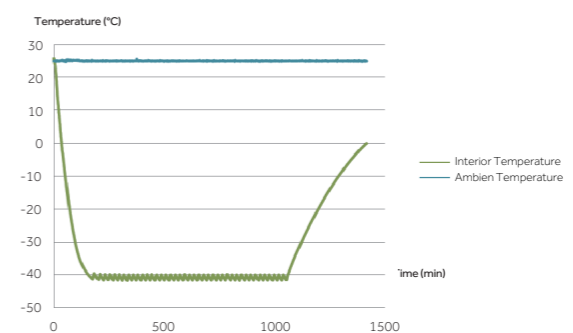
Built-in evaporator and adjustable shelves provides large available interior space. Users can store items of different sizes as needed



DW-40L298J

### Temperature Curve

DW-40L298J Typical Performance Characteristics at 25°C Ambient



**-40°C Biomedical Freezer (Upright)****-40°C Biomedical Freezer (Upright)****Specifications**

Model	DW-40L92		DW-40L262		DW-40L278		DW-40L298J	DW-40L568J		
Technical Data	Cabinet Type	Upright		Upright		Upright		Upright		
	Climate Class	SN N		SN N		SN N		SN N		
	Cooling Type	Direct Cooling		Direct Cooling		Direct Cooling		Direct Cooling		
	Defrost Mode	Manual		Manual		Manual		Manual		
	Refrigerant	HC		HC	CFC-Free	HC	CFC-Free	HC		
	Sound Level (dB(A))	29		41	44	40	44	39.2	45	
Performance	Cooling Performance (°C)	-40		-40		-40		-40	-40	
	Temperature Range (°C)	-20~-40		-20~-40		-20~-40		-20~-40	-20~-40	
Control	Controller	Microprocessor		Microprocessor		Microprocessor		Microprocessor	Microprocessor	
	Display	LCD		LCD		LCD		LED	LCD	
Electrical Data	Power Supply (V/Hz)	220-240/50/60		220-240/50/60	115/60	220-240/50	220-240/50/60	220-240/50	220-240/50	
	Power (W)	340		310	600	275	370	570	340	
	Electrical Current (A)	2.2		2	7.5	2.9	5.1	4.1	2.8	
	Power Consumption (kWh/24h)	1.4		2.6	4.3	3.1	5.3	/	4	
Construction	Capacity (L/Cu.Ft)	92/3.2		262/9.3		278/98		298/10.5	568/20.1	
	Net/Gross Weight (approx)	kg	46/51		88/93		115/135		125/140	190/215
		lbs	101.4/112.4		194.0/205.0		253.5/297.6		275.6/308.6	418.9/474
	Interior Dimensions (W*D*H)	mm	435*410*635		480*465*1430		520*435*1230		541*443*1218	610*755*1260
		in	17.1*16.1*25.0		18.9*18.3*56.3		20.5*17.1*48.4		21.3*17.4*48.0	24/29.7/49.6
	Exterior Dimensions (W*D*H)	mm	640*610*810		700*705*1665		770*710*1810		770*710*1828	848*951*1780
		in	25.2*24.0*31.9		27.6*27.8*65.6		30.3*28.0*71.3		30.3*28.0*72.0	33.4/37.4/70.1
	Packing Dimensions (W*D*H)	mm	660*700*900		775*760*1880		832*757*1992		832*757*1992	900*1035*1910
in		26.0*27.6*35.4		30.5*29.9*74.0		32.8*29.8*78.4		32.8*29.8*78.4	35.4/40.7/75.2	
Loading Quantities	Container Load (20'/40'/40'H)	48/108/108		21/45/45		21/42/42		21/42/42	12/26/26	
Alarms	High/Low Temperature	Y		Y		Y		Y	Y	
	Remote Alarm	Y		Y		Y		Y	Y	
	Power Failure	Y		Y		Y		Y	Y	
	Sensor Error	Y		Y		Y		Y	Y	
	Low Battery	/		/		Y		Y	/	
	High Ambient Temperature	Y		Y		Y		Y	Y	
	Door Ajar	Y		Y		Y		Y	Y	
Accessories	Caster	Y		Y		Y		Y	Y	
	Foot	Y		Y		Y		Y	Y	
	Porthole	Y		Y		Y		Y	Y	
	Drawers/Inner Doors	3/-		7/-		6/-		Optional/2	- / 2	
	USB Interface	Optional		Optional	/	Optional		Optional	Optional	
	RS485	Optional		Optional		Optional		Optional	Optional	
Temperature Recorder	/		/		Optional		Optional	Optional		
Certification	CE	Y		Y	/	Y		Y	Y	

\*Haier Biomedical reserves the right to change products and specifications without prior notice.

## -40°C Biomedical Freezer (Double Doors Type)

The double door -40°C biomedical freezer models offer a large capacity storage space with rapid cooling. Integrated design of cold shelf and evaporator provides additional refrigeration efficiency. Designed to store vaccines, blood plasma and many other biological materials. Installations can be found in research institutions and clinical sites in the life science, pharma, biotech, medical and electronics sectors.



DW-40L508

DW-40L348



Control Panel



Drawer



Shelf

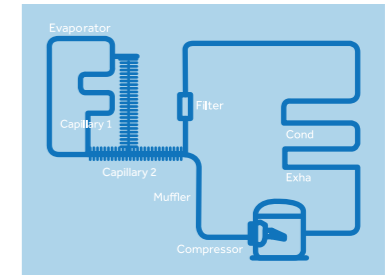
CCAT Scientific 0800 222 812 info@ccat.co.nz

## -40°C Biomedical Freezer (Double Doors Type)

The DW-40L348 is based on the original work horse platform of DW-40L508. The new freezer model operates with two capillary tubes and is equipped with dual gaskets to improve the temperature uniformity through the chamber drastically. It can be installed to satisfy tougher application requirements in universities, research institutions and blood banks.

### Reliability and Key Features

- Rated for -40°C at 32°C ambient
- Rapid cooling with shelf evaporator
- Improved temperature uniformity with dual capillary tube design at the range of -20°C to -40°C
- Improved door seal design with two gaskets maintains cabinet temperature more efficiently
- Reduced frost buildup
- 90mm insulation thickness for additional robustness, less power consumption and better temperature retaining ability
- Drawer design maximizes storage space. One unit can hold 360 bags of 230 ml blood bags
- Optional USB interface



### Safety

- Multiple alarms include high/low temperature, power failure, sensor error, low battery, high ambient temperature
- Two types of alarms: buzzer and flashing light, remote alarm

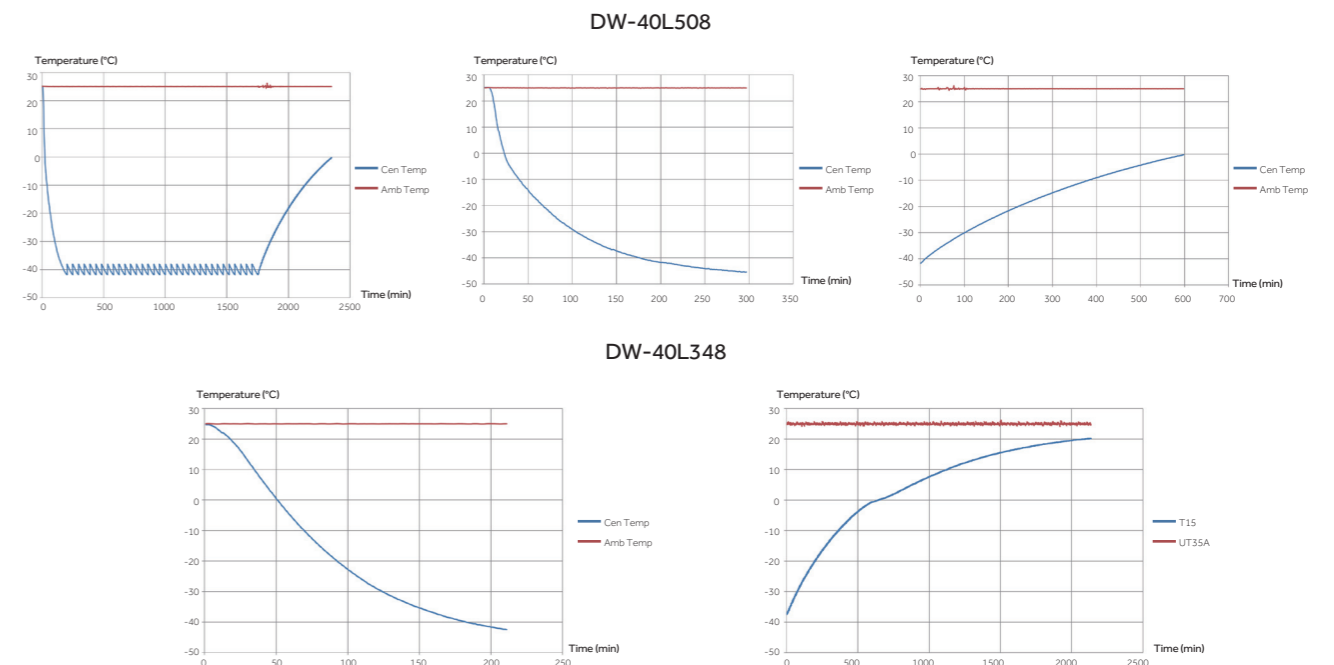


### Ergonomic Design

- LED digital display
- Double door design with independent locks to ensure temperature stability and lower power consumption
- Label holders for product identification



### Temperature Curve



## -40°C Biomedical Freezer (Double Doors Type)

## -40°C Biomedical Freezer (Double Doors Type)

Suitable for the storage of plasma, biological material, reagents and other essential items. Used within hospitals, disease prevention, academia and commercial laboratories.



DW-40L418D/528D

### Scope of Application:



#### HC Energy-saving

High efficiency hydrocarbon compressor and refrigeration technology for a lower energy consumption



#### Superior Uniformity

With the optimized system design, the temperature uniformity of the characteristic point is  $\pm 3^{\circ}\text{C}$ , and the uniformity of the whole temperature zone is controlled within  $\pm 5^{\circ}\text{C}$



#### Environmental Protection

Hydrocarbon refrigerant, LBA foam polyurethane insulation layer

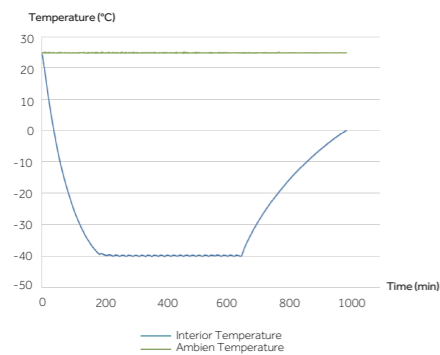


#### Adjustable Shelves

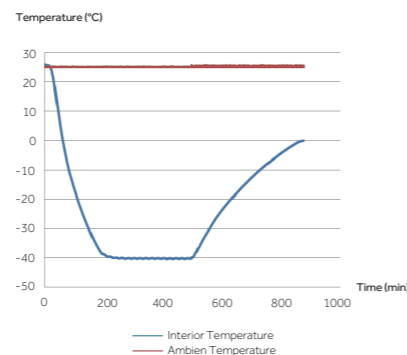
Built-in evaporator and adjustable shelves provides large available interior space. Users can store items of different sizes as needed

### Temperature Curve

DW-40L418D Typical Performance Characteristics at 25°C Ambient



DW-40L528D Typical Performance Characteristics at 25°C Ambient



### Specifications

Model	DW-40L348	DW-40L508	DW-40L418D	DW-40L528D		
Technical Data	Cabinet Type	Upright, Double Door	Upright, Double Door	Upright	Upright	
	Climate Class	SN N	SN N	SN N	SN N	
	Cooling Type	Direct Cooling	Direct Cooling	Direct Cooling	Direct Cooling	
	Defrost Mode	Manual	Manual	Manual	Manual	
	Refrigerant	HC	HC	CFC-Free	HC	
	Sound Level (dB(A))	41	41	45	41.7	45
Performance	Cooling Performance (°C)	-40	-40	-40	-40	
	Temperature Range (°C)	-20--40	-20--40	-20--40	-20--40	
Control	Controller	Microprocessor	Microprocessor	Microprocessor	Microprocessor	
	Display	LED	LED	LED	LED	
Electrical Data	Power Supply (V/Hz)	220-240/50	220-240/50	208-230/60	220-240/50	
	Power (W)	280	285	510	640	630
	Electrical Current (A)	2.9	2.9	5.6	4.2	5.7
	Power Consumption (kWh/24h)	3.3	3.8	6.6	/	/
Construction	Capacity (L/Cu.Ft)	348/12.3	490/17.3	418/14.8	531/18.8	
	Net/Gross Weight (approx)	kg	137/145	164/200	145/165	180/205
		lbs	302.0/320.0	361.6/440.9	319.7/363.8	396.8/451.9
	Interior Dimensions (W*D*H)	mm	535*610*1228	685*610*1228	554*620*1230	704*620*1230
		in	21.1*24.0*48.3	27.0*24.0*48.3	21.8*24.4*48.4	27.7*24.4*48.4
	Exterior Dimensions (W*D*H)	mm	790*845*1860	940*845*1860	790*845*1878	940*845*1878
		in	31.1*33.3*73.2	37.0*33.3*73.2	31.1*33.3*73.9	37.0*33.3*73.9
	Packing Dimensions (W*D*H)	mm	852*927*2044	997*927*2044	852*927*2044	997*927*2044
in		33.5*36.5*80.5	39.3*36.5*80.5	33.5*36.5*80.5	39.3*36.5*80.5	
Loading Quantities	Container Load (20'/40'/40'H)	12/28/28	12/24/24	12/28/28	12/24/24	
Alarms	High/Low Temperature	Y	Y	Y	Y	
	Remote Alarm	Y	Y	Y	Y	
	Power Failure	Y	Y	Y	Y	
	Sensor Error	Y	Y	Y	Y	
	Low Battery	Y	Y	Y	Y	
	High Ambient Temperature	Y	Y	Y	Y	
	Door Ajar	/	/	Y	Y	
	Caster	Y	Y	Y	Y	
Accessories	Foot	Y	Y	Y	Y	
	Porthole	Y	Y	Y	Y	
	Drawers/Inner Doors	12/-	10/-	Optional/-	Optional/-	
	USB Interface	Optional	Optional	Optional	Optional	
	RS485	Optional	Optional	Optional	Optional	
	Temperature Recorder	Optional	Optional	Optional	Optional	
Certification	CE	Y	Y	Y	Y	

\*Haier Biomedical reserves the right to change products and specifications without prior notice.



# -40°C Smart Frequency Conversion Biomedical Freezer

# -40°C Smart Frequency Conversion Biomedical Freezer



DW-40L818BP

## Product Features

- High-efficiency and energy-saving compressor and system**  
 Optimized refrigeration system with a high efficiency inverter compressor to reduce energy consumption
- Green and environmental friendly**  
 Hydrocarbon refrigerant, energy saving and environmental protection, built with Urethane foam insulation complies with European ROHS regulation
- Superior temperature uniformity in a large storage space**  
 Built-in evaporator design, and the shelf height can be adjusted according to the size of the stored articles, so as to realize the efficient use of large space in the cabinet.  
 The temperature uniformity is  $\pm 3^{\circ}\text{C}$  with the setting temperature of  $-40^{\circ}\text{C}$ .
- Low sound level**  
 Noise level less than 45 dB, providing a more comfortable environment

## Specifications

Model		DW-40L818BP	
Technical Data	Cabinet Type	Upright	
	Climate Class	SN N	
	Cooling Type	Direct Cooling	
	Defrost Mode	Manual	
	Refrigerant	HC	
Performance	Sound Level (dB(A))	44 (220V/50Hz)	
	Cooling Performance ( $^{\circ}\text{C}$ )	-40	
Control	Temperature Range ( $^{\circ}\text{C}$ )	-20--40	
	Controller	Microprocessor	
Electrical Data	Display	LED	
	Power Supply (V/Hz)	100-230/50/60	
	Power (W)	795	
Dimensions	Electrical Current (A)	7.9	
	Capacity (L/Cu.Ft)	818/28.9	
	Net/Gross Weight (approx)	(kg)	210/240
		(lbs)	463.0/529.1
	Interior Dimension (W*D*H)	(mm)	750*755*1460
		(in)	29.5/29.7/57.5
	Exterior Dimension (W*D*H)	(mm)	988*951*1980
		(in)	38.9/37.4/78.0
	Packing Dimension (W*D*H)	(mm)	1040*1060*2150
		(in)	40.9/41.7/84.6
Container Load (20'/40'/40'H)		10/22/22	
Alarms	High/Low Temperature	Y	
	Remote Alarm	Y	
	Power Failure	Y	
	Sensor Error	Y	
	Low Battery	Y	
	High Ambient Temperature	Y	
	Door Ajar	Y	
Accessories	Castor	Y	
	Foot	Y	
	Porthole	Y	
	Drawers/Inner Doors	-/3	
	USB Interface	Optional	
Others	RS485	Y	
	Temperature Recorder	Optional	
	Certificate	CE	

## Ergonomic Design

**Microprocessor-controlled system**  
 Microprocessor control, with temperature display precision at  $0.1^{\circ}\text{C}$ . Internal temperature is adjustable from  $-20^{\circ}\text{C}$  to  $-40^{\circ}\text{C}$ .

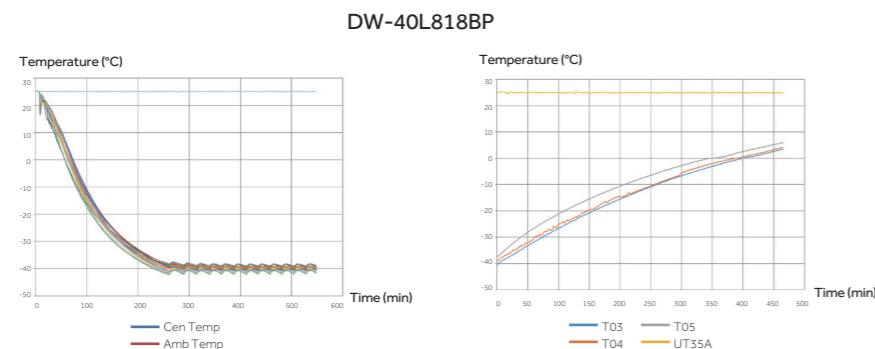
**Multiple alarm functions**  
 Including high/ low temperature, sensor error, power failure, low battery, high ambient, and door ajar alarms. Alarm mode is sound and flash. And the remote alarm interface is available

**Configuration**  
 Standard: RS485 interface  
 Optional: Temperature recorder, USB interface, 10-inch touch screen

**Safe and secure**  
 Equipped with key lock, padlock, optional electronic lock, providing multiple safeguards for sample safety

**Porthole**  
 Two portholes as standard, allows for independent testing of cabinet temperature

## Temperature Curve



\*Haier Biomedical reserves the right to change products and specifications without prior notice.

CCAT Scientific 0800 222 812 info@ccat.co.nz

Specifications



Model	DW-40L92		DW-40L262		DW-40L278		DW-40L348		DW-40L508		DW-40L818BP			
Technical Data	Cabinet Type	Upright		Upright		Upright		Upright, Double Door		Upright, Double Door		Upright		
	Climate Class	SN N		SN N		SN N		SN N		SN N		SN N		
	Cooling Type	Direct Cooling		Direct Cooling		Direct Cooling		Direct Cooling		Direct Cooling		Direct Cooling		
	Defrost Mode	Manual		Manual		Manual		Manual		Manual		Manual		
	Refrigerant	HC		HC	CFC-Free	HC	CFC-Free	HC		HC	CFC-Free	HC		
Performance	Sound Level (dB(A))	29		41	44	40	44	41		41	45	44 (220/50)		
	Cooling Performance (°C)	-40		-40		-40		-40		-40		-40		
	Temperature Range (°C)	-20~-40		-20~-40		-20~-40		-20~-40		-20~-40		-20~-40		
Control	Controller	Microprocessor		Microprocessor		Microprocessor		Microprocessor		Microprocessor		Microprocessor		
	Display	LCD		LCD		LED		LED		LED		LED		
Electrical Data	Power Supply (V/Hz)	220-240/50/60		220-240/50/60	115/60	220-240/50	220-240/50/60	220-240/50		220-240/50	208-230/60	100-230/50/60		
	Power (W)	340		310	600	275	370	280		285	510	795		
	Electrical Current (A)	2.2		2	7.5	2.9	5.1	2.9		2.9	5.6	7.9		
	Power Consumption (kWh/24h)	1.4		2.6	4.3	3.1	5.3	3.3		3.8	6.6	/		
Construction	Capacity (L/Cu.Ft)	92/3.2		262/9.3		278/9.8		348/12.3		490/17.3		818/28.9		
	Net/Gross Weight (approx)	kg	46/51		88/93		115/135		137/145		164/200		210/240	
		lbs	101.4/112.4		194.0/205.0		253.5/297.6		302.0/320.0		361.6/440.9		463.0/529.1	
	Interior Dimensions (W*D*H)	mm	435*410*635		480*465*1430		520*435*1230		535*610*1228		685*610*1228		750*755*1460	
		in	17.1*16.1*25.0		18.9*18.3*56.3		20.5*17.1*48.4		21.1*24.0*48.3		27.0*24.0*48.3		29.5/29.7/57.5	
	Exterior Dimensions (W*D*H)	mm	640*610*810		700*705*1665		770*710*1810		790*845*1860		940*845*1860		988*951*1980	
in		25.2*24.0*31.9		27.6*27.8*65.6		30.3*28.0*71.3		31.1*33.3*73.2		37.0*33.3*73.2		38.9/37.4/78.0		
Packing Dimensions (W*D*H)	mm	660*700*900		775*760*1880		832*757*1992		852*927*2044		997*927*2044		1040*1060*2150		
	in	26.0*27.6*35.4		30.5*29.9*74.0		32.8*29.8*78.4		33.5*36.5*80.5		39.3*36.5*80.5		40.9/41.7/84.6		
Loading Quantities	Container Load (20'/40'/40'H)	48/108/108		21/45/45		21/42/42		12/28/28		12/24/24		10/22/22		
Alarms	High/Low Temperature	Y		Y		Y		Y		Y		Y		
	Remote Alarm	Y		Y		Y		Y		Y		Y		
	Power Failure	Y		Y		Y		Y		Y		Y		
	Sensor Error	Y		Y		Y		Y		Y		Y		
	Low Battery	/		/		Y		Y		Y		/		
	High Ambient Temperature	Y		Y		Y		Y		Y		Y		
	Door Ajar	Y		Y		Y		/		/		Y		
Accessories	Caster	Y		Y		Y		Y		Y		Y		
	Foot	Y		Y		Y		Y		Y		Y		
	Porthole	Y		Y		Y		Y		Y		Y		
	Drawers/Inner Doors	3/-		7/-		6/-		12/-		10/-		-/3		
	USB Interface	Optional		Optional	/	Optional		Optional		Optional		Optional		
	RS485	Optional		Optional		Optional		Optional		Optional		Y		
Certification	Temperature Recorder	/		/		Optional		Optional		Optional		Optional		
	CE	Y		Y	/	Y		Y		Y		Y		

Product appearance and specifications are subject to change without notice

Specifications



Model	DW-40W138J	DW-40W255J	DW-40W380J	DW-40L298J	DW-40L568J	DW-40L418D	DW-40L528D	
Technical Data	Cabinet Type	Chest	Chest	Chest	Upright	Upright	Upright	
	Climate Class	SNN	SNN	SNN	SNN	SNN	SNN	
	Cooling Type	Direct Cooling	Direct Cooling	Direct Cooling	Direct Cooling	Direct Cooling	Direct Cooling	
	Defrost Mode	Manual	Manual	Manual	Manual	Manual	Manual	
	Refrigerant	HC	HC	HC	HC	HC	HC	
	Sound Level (dB(A))	42	42	42	39.2	45	41.7	45
Performance	Cooling Performance (°C)	-40	-40	-40	-40	-40	-40	
	Temperature Range (°C)	-20~-40	-20~-40	-20~-40	-20~-40	-20~-40	-20~-40	
Control	Controller	Microprocessor	Microprocessor	Microprocessor	Microprocessor	Microprocessor	Microprocessor	
	Display	LCD	LCD	LCD	LED	LCD	LED	
Electrical Data	Power Supply (V/Hz)	220-240/50	220-240/50	220-240/50	220-240/50	220-240/50	220-240/50	
	Power (W)	260	370	450	570	340	630	
	Electrical Current (A)	2.3	3.1	2.9	4.1	2.8	4.2	
	Power Consumption(kWh/24h)	/	/	/	/	4	/	
Construction	Capacity (L/Cu.Ft)	138/3.9	255/9.0	380/13.4	298/10.5	568/20.1	418/14.8	
	Net/Gross Weight (approx)	kg	52/65	76/96	90/115	125/140	190/215	145/165
		lbs	114.6/143.3	167.5/211.6	198.4/253.5	275.6/308.6	418.9/474	319.7/363.8
	Interior Dimensions (W*D*H)	mm	580*445*620	1000*445*620	1450*445*620	541*443*1218	610*755*1260	554*620*1230
		in	22.8*17.5*24.4	39.4*17.5*24.4	57.1*17.5*24.4	21.3*17.4*48.0	24/29.7/49.6	21.8*24.4*48.4
	Exterior Dimensions (W*D*H)	mm	790*770*950	1210*770*950	1655*770*950	770*710*1828	848*951*1780	790*845*1878
		in	31.1*30.3*37.4	47.6*30.3*37.4	65.2*30.3*37.4	30.3*28.0*72.0	33.4/37.4/70.1	31.1*33.3*73.9
	Packing Dimensions (W*D*H)	mm	815*800*990	1255*800*990	1695*800*990	832*757*1992	900*1035*1910	852*927*2044
in		32.1*31.5*39	49.4*31.5*39	66.7*31.5*39	32.8*29.8*78.4	35.4/40.7/75.2	33.5*36.5*80.5	
Loading Quantities	Container Load (20'/40'/40'H)	28/56/56	22/46/46	14/28/28	21/42/42	12/26/26	12/28/28	
Alarms	High/Low Temperature	Y	Y	Y	Y	Y	Y	
	Remote Alarm	Optional	Optional	Optional	Y	Y	Y	
	Power Failure	Y	Y	Y	Y	Y	Y	
	Sensor Error	Y	Y	Y	Y	Y	Y	
	Low Battery	/	/	/	Y	/	Y	
	High Ambient Temperature	Optional	Optional	Optional	Y	Y	Y	
	Door Ajar	/	/	/	Y	Y	Y	
Accessories	Caster	Y	Y	Y	Y	Y	Y	
	Foot	/	/	/	Y	Y	Y	
	Porthole	Y	Y	Y	Y	Y	Y	
	Drawers/Inner Doors	/	/	/	Optional/2	- / 2	Optional/2	
	USB Interface	Optional	Optional	Optional	Optional	Optional	Optional	
	RS485	(USB or RS485, either-or)	(USB or RS485, either-or)	(USB or RS485, either-or)	Optional	Optional	Optional	
	Temperature Recorder	/	/	/	Optional	Optional	Optional	
Certification	CE	Y	Y	Y	Y	Y	Y	

Product appearance and specifications are subject to change without notice

### Typical Installation and Application

Large capacity, double door biomedical freezer, designed and manufactured for the low temperature storage of plasma, biological products and other items.



DW-30L1280F

### Product Advantages

Microcomputer control, LED digital temperature display with inside temperature accuracy of 0.1°C

Supersized double outer doors, 70mm insulation layer

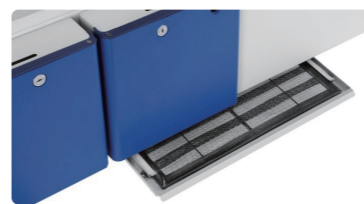
Safe lock  
Electronic mortise lock design, with NFC clocking-in function (fingerprint optional)



Low noise

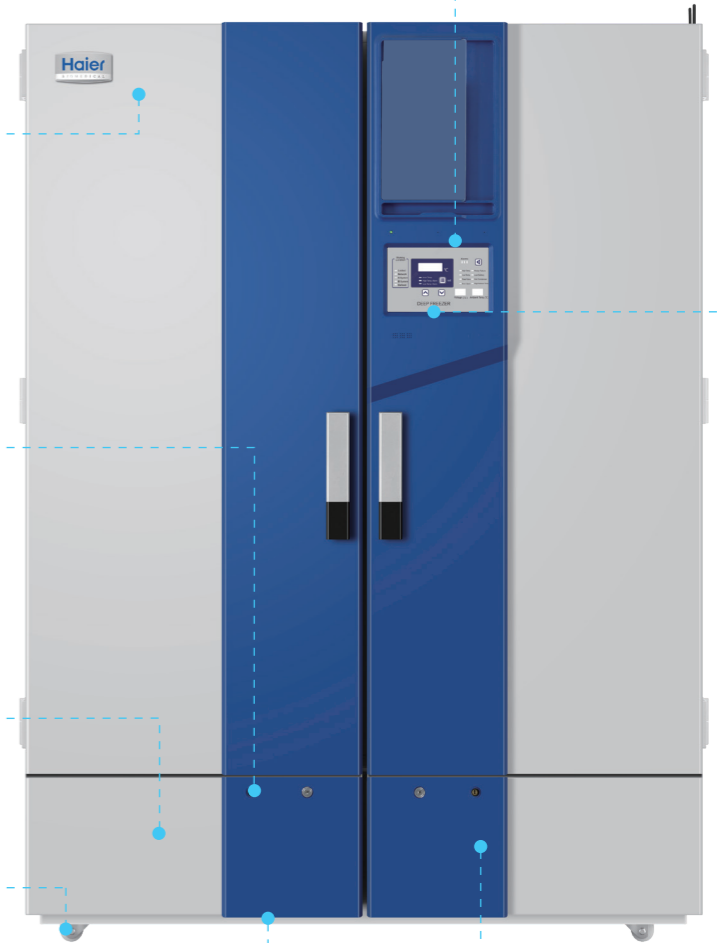
Casters and feet  
4 omnidirectional casters + 2 level legs, easy to move, lock and level

Bottom strainer drawable design  
Easy to clean



Optimized system  
Ensures fast cool down, reaches -30°C within 3 hours

Standard USB port  
Capable of storing more than 15 years of data



Key Features



**Intelligent Defrosting: Prolongs the Defrosting Cycle, Safeguarding the Stability of the Storage Temperature**

Compared with traditional timed defrosting, the intelligent defrosting technology reduces the defrosting frequency by half, effectively draws down the temperature fluctuation caused by defrosting during the sample storage cycle by intelligently identifying the amount of frost on the evaporator.



**Dual Independent Refrigeration Systems: Superior Safety**

If one system fails, the other one would reach -25°C quickly, which doubles the safety of the sample; With air cooling technology, the inside uniformity can reach ±3°C (±5°C during the defrosting period).



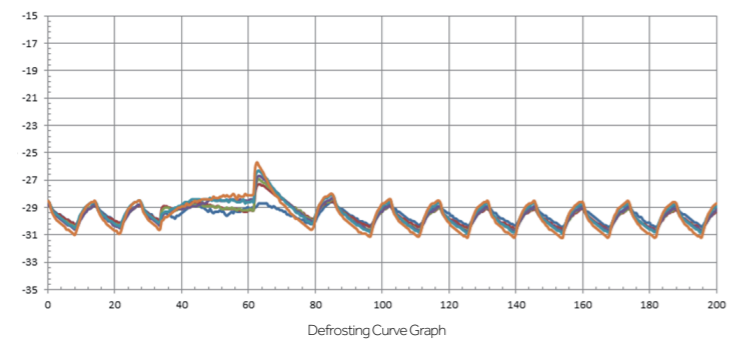
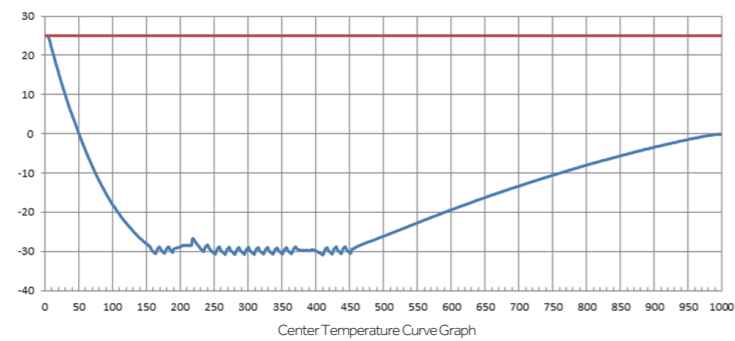
**Advanced Defrosting Technology Optimised Safety**

The automatic hot gas defrosting technology eliminates the risk of electrical leakage which can occur with heated wire defrosting techniques.



**Green Hydrocarbon Refrigeration**

The DW-30L1280F utilises HC refrigeration technology which is energy-efficient and has a zero impact on the ozone layer. The energy consumption of this model is 8kW/24H.



This freezer is designed for storage of critical and temperature sensitive biological samples, laboratory products and medical products in institutions such as blood banks, hospitals and research laboratories.

Key Features

- Forced air and auto defrost design: -30°C storage temperature with automatic defrost cycles guided by time and temperature, ensure maximum temperature stability and minimize energy use
- High-performance refrigeration system: achieves excellent temperature uniformity with intelligent operation control at -30°C
- Microprocessor control with digital display: 0.1° C control increments, adjustable range of -10°C to -30°C



- Door lock and padlock
- Backup battery protection
- USB
- Malfunction Alarms

DW-30L420F



Drawer (Optional)



Microprocessor control panel



Air distribution

## -30°C Biomedical Freezer (Forced Air Cooling)

## -30°C Biomedical Freezer (Forced Air Cooling)

### Safety

- The alarm system includes audible and visual alerts. Alarms include high and low temperature, sensor error, power failure, door ajar, low battery and high ambient temperature. Remote contacts are standard
- A backup battery ensures the display and display continue to operate in the event of a power failure for up to 48hrs
- Standard USB port on DW-30L420F allows users to download temperature data
- Lockable door with padlock facility for added sample security



### Specifications

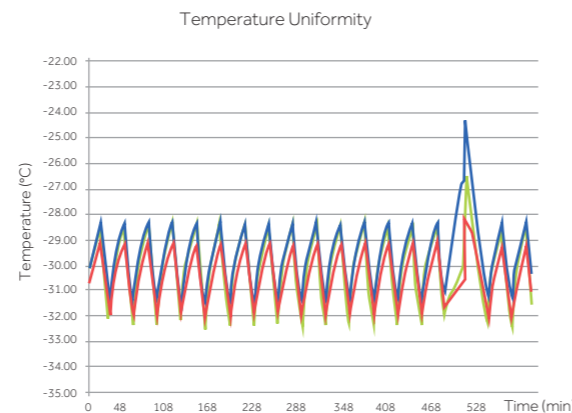
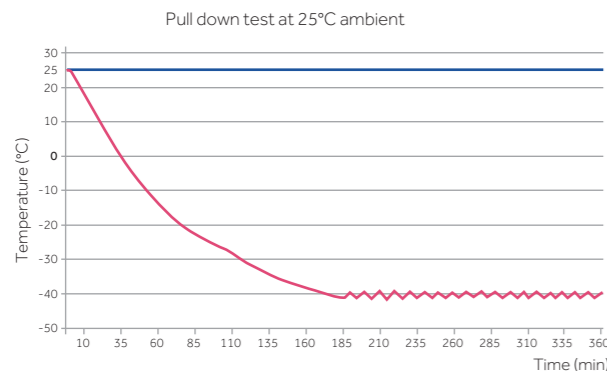
	Model	DW-30L420F	DW-30L1280F	
Technical Data	Cabinet Type	Upright	Upright	
	Climate Class	SN N	N	
	Cooling Type	Forced air cooling	Forced air cooling	
	Defrost Mode	Automatic (Evaporator), Manual (Inner cabinet & Door frame)	Automatic (Evaporator), Manual (Inner cabinet & Door frame)	
	Refrigerant	HC	HC	
Performance	Noise (dB(A))	46	46	
	Cooling Performance (°C)	-30	-30	
Control	Temp Range (°C)	-10--30	-10--30	
	Controller	Microprocessor	Microprocessor	
Electrical Data	Display	LED	LED	
	Power Supply (V/Hz)	220-240/50   208-230/60	220-240/50	
	Power (W)	460/1000 (Defrost)	900W (220V/50Hz)	
	Electrical Current (A)	4.0/5.8 (Defrost)	5	
Construction	Power Consumption (kWh/24h)	4.6   5.3	8	
	Capacity (L/Cu.Ft)	420/14.8	1280/45.2	
	Net/Gross Weight(approx)	kg	195/225	420/480
		lbs	429.9/496.0	925/1057
	Interior Dimension(W*D*H)	mm	685*610*1028	1320*752*1260
		in	27.0*24.0*40.5	52/29.6/49.6
Exterior Dimension(W*D*H)	mm	950*920*1900	1520*1065*1996	
	in	37.4*36.2*74.8	59.8/41.9/78.6	
Packing Dimension(W*D*H)	mm	980*935*2040	1570*1080*2130	
	in	38.6*36.8*80.3	61.8/42.5/83.8	
Loading Quantities	Container Load (20'/40'/40'H)	12/24/24	6/14/14	
Alarms	High/Low Temperature	Y	Y	
	Remote Alarm	Y	Y	
	Power Failure	Y	Y	
	Sensor Error	Y	Y	
	Low Battery	Y	Y	
	High Ambient Temperature	Y	Y	
	Door Ajar	Y	Y	
Accessories	Castor	Y	Y	
	Foot	Y	Y	
	Porthole	Y	Y	
	Drawers	-/3   6/-	12	
	USB Interface	Y	Optional	
	RS485	Optional	Y	
Certification	CE	Y   /	Y	

F suffix - Forced air cooling  
 Product appearance and specifications are subject to change without notice

### Ergonomic Design

- Self-closing door with 90° stay-open feature conserves energy and helps maintain temperature uniformity to protect your valuable samples
- Corrosion-free interior brushed stainless steel liner and exterior coated steel plate
- 5 adjustable stainless steel shelves and optional drawer
- Casters and levelling legs, easy to move and lock

### Temperature Curve



\*Freezer set-point -30 °C, ambient temperature 25 °C

CCAT Scientific 0800 222 812 info@ccat.co.nz

### Typical Installation and Application

Suitable for sample storage within blood banks, hospitals, disease control centres, research institutes, electronic, chemical and other industries, cryopreservation of plasma, biologics and other products, also suitable for cold tests for components and materials.



DW-30L818BP

### Key Features



**Energy-efficient Variable Frequency Inverter Technology**

Optimized refrigeration system with a high efficiency inverter compressor to reduce energy consumption.



**Large Capacity Storage with Excellent Temperature Uniformity**

The unit offers a large storage space with adjustable shelves, the built-evaporator ensures quick temperature pull down times and excellent temperature uniformity of  $\pm 3^{\circ}\text{C}$



**Low Noise**

Sound reduction design lowers the sound level to 37dB(A) at 220V/50Hz.



**Environment Friendly**

1) HC refrigeration system contains zero chlorine and fluorine, which is better for the environment.  
2) Urethane foam insulation complies with European ROHS regulation.

### Product Advantages

Ergonomic Design: document holding compartment for storing size A4 paper and pens.

Optional USB port allows users to download temperature data saved up to 10 years for compliance and auditing purposes.

Double door seals for better insulation performance.

Microprocessor temperature control: LED displays cabinet temperature with 0.1°C resolution, ambient temperature, and input voltage.



Pressure equalization port for easy door opening.

Ergonomic handle design: easy access to storage space, built in lock and padlock features.

Inner door design reduces loss of cold air to improve energy efficiency and stable temperature.

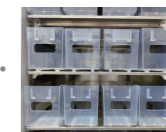
Casters and leveling legs for ease of maneuvering and positioning.

DW-30L818BP

Optional stainless steel shelves or coated steel are adjustable.



Power coating galvanized interior with large round corner design, corrosion resistance and easy to clean.



Plastic ABS drawer (optional): 25 blood bags (450ml/bag) can be loaded for one drawer, totally 750 blood bags for 30 drawers. (Note: The dimension of one blood bag is 125\*26\*190mm)

CCAT Scientific 0800 222 812 info@ccat.co.nz

## -30°C Smart Frequency Conversion Biomedical Freezer

## -30°C Biomedical Freezer (Direct Cooling)

### Microprocessor Control System

- Microprocessor-based temperature control.
- Large LED displays cabinet temperature with 0.1 °C resolution with adjustable temperature setting from -10 °C to -30 °C.
- Cabinet temperature, ambient temperature and voltage are shown on the panel.
- Alarm conditions include high and low temperature, sensor error, power failure, low battery, door ajar and high ambient.
- Alarm modes are audible and flashing lights. Remote alarm terminals are available.
- Battery supports display and alarm system for forty eight hours after power outage.
- Optional features are IoT module, USB port, temperature recorder and NFC swipe card functions.

### Insulation

- 70 mm thick insulation.
- Inner doors for better thermal efficiency.

### Porthole

Two standard portholes allow ease of temperature testing.

### Security Lock

Lock is standard. Magnetic lock is optional for added protection and security

### Temperature Recorder

Optional temperature recorder for temperature recording and compliance.



### Typical Installation and Application

For use in blood banks, hospitals, research institutions, electronics, chemical and other industries, for the preservation of plasma and biological products and cryogenic test of components and materials.

### Key Features



#### Energy Efficient Hydrocarbon (HC) Refrigeration System

Optimised refrigeration system, utilising high-efficiency HC compressor significantly reduces energy consumption.



#### Greener By Design

HC refrigerants are natural non-toxic and more environmentally friendly than HFC refrigerants. This alongside the HC compressor technology and LBA foamed polyurethane insulation layer, make this unit greener and in-line with European ROHS directives and environmental protection guidelines.



#### Large Capacity, Superior Uniformity

Built-in evaporator for faster cooling speed and uniform temperature throughout the cabinet, ±3°C. Large internal space with adjustable shelves for flexible configuration.



#### Low Noise

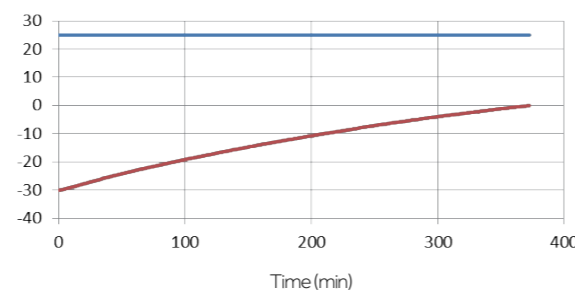
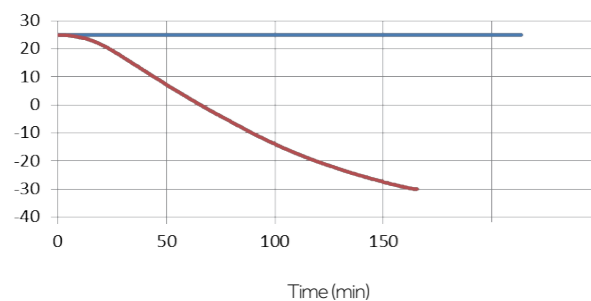
Optimised system and cabinet design ensures low noise emissions, less than 44dB.



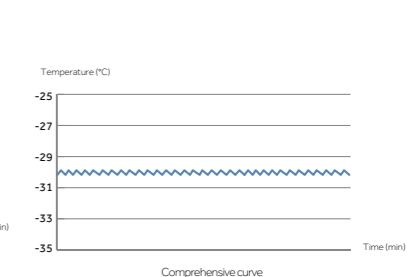
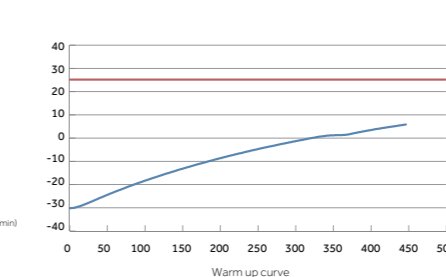
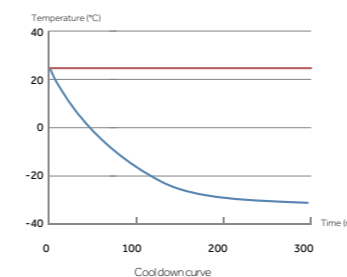
DW-30L818

### Typical Performance Characteristics at 25°C ambient

— Ambient Temp.  
— Center Temp.



### Typical Performance Characteristics at 25°C ambient



— Ambient Temp.  
— Cabinet Temp.



Product Advantages

**Easy to clean and Corrosion Resistant**  
Electric zinc plate powder sprayed internal liner and large round corner design and coated steel plate exterior design ensure reliable corrosion prevention which is easy to clean.

**Ergonomic Handle Design:** easy access to storage space, built in lock and padlock features.

**Double Seal Design:** Provides better insulation and saves energy.

**Inner doors prevent rapid loss of cold air,** saving energy and reducing temperature fluctuations.

**4 multi-directional casters and 2 lockable feet** make it easy to move, level and lock in place.

**DW-30L818**

**Microcomputer electronic thermostat,** LCD digital display of inside temperature, with 0.1°C display accuracy.

**Flexible Internal Storage**  
Equipped with 5 plastic coated steel wire shelves with optional stainless steel shelves, which are adjustable to meet the different requirements of users.

**Plastic ABS drawer (optional):** 25 blood bags (450ml/bag) can be loaded for one drawer, totally 750 blood bags for 30 drawers.  
(Note: The dimension of one blood bag is 125\*26\*190mm)

CCAT Scientific 0800 222 812 info@ccat.co.nz

Specifications

	Model	DW-30L818	DW-30L818BP	
Technical Data	Cabinet Type	Upright	Upright	
	Climate Class	SN N	SN N	
	Cooling Type	Direct Cooling	Direct Cooling	
	Defrost Mode	Manual	Manual	
	Refrigerant	HC	HC	
	Sound Level (dB(A))	44	37 (220V/50Hz)	
Performance	Cooling Performance (°C)	-30	-30	
	Temp Range (°C)	-10--30	-10--30	
Control	Controller	Microprocessor	Microprocessor	
	Display	LCD	LED	
Electrical Data	Power Supply (V/Hz)	220-240/50	100-230/50/60	
	Power (W)	380	680	
	Electrical Current (A)	2.8	7.7	
	Power Consumption (kWh/24h)	3.5	3.3	
Construction	Capacity (L/Cu.Ft)	818/28.8	818/28.8	
	Net/Gross Weight (approx)	kg	205/235	210/240
		lbs	451.9/518.1	463.0/529.1
	Interior Dimension (W*D*H)	mm	750*755*1460	750*755*1460
		in	29.5*29.7*57.5	29.5/29.7/57.5
	Exterior Dimension (W*D*H)	mm	988*951*1980	988*951*1980
in		38.9/37.4/78.0	38.9/37.4/78.0	
Packing Dimension (W*D*H)	mm	1040*1060*2150	1040*1060*2150	
	in	40.9/41.7/84.6	40.9/41.7/84.6	
Loading Quantities	Container Load (20'/40'/40'H)	10/22/22	10/22/22	
Alarms	High/Low Temperature	Y	Y	
	Remote Alarm	Y	Y	
	Power Failure	Y	Y	
	Sensor Error	Y	Y	
	Low Battery	/	Y	
	High Ambient Temperature	Y	Y	
	Door Ajar	Y	Y	
	Castor	Y	Y	
Accessories	Foot	Y	Y	
	Porthole	Y	Y	
	Inner Doors	3	3	
	Temperature Recorder	Optional	Optional	
	USB Interface	Optional	Optional	
	RS485 Port	Optional	Y	
Certification	CE	Y	Y	

BP suffix - Variable frequency inverter compressor

Product appearance and specifications are subject to change without notice

Haier Biomedical -30°C biomedical freezer with smart control and energy-saving hydrocarbon refrigeration system for safe and reliable product storage.



DW-30L278

DW-30L508

### Application

Biomedical and life science laboratories within blood banks, hospitals, disease control centres and research institutes as well as electronics and chemical industries. Used for cryopreservation of plasma, biological samples and other products and cold tests for components and materials.

### Advantages

- **High-efficiency and energy-saving compressor and refrigeration system**

Industrial grade energy-saving compressor and optimized cooling system reduces power consumption by more than 55% compared with older models.

- **Superior temperature uniformity**

Evaporator-shelf design speeds up the cooling process and provides a more uniform temperature distribution. The temperature uniformity at specific points throughout the unit is  $\pm 4^{\circ}\text{C}$ .

- **Green and environmentally friendly**

Hydrocarbon refrigerant compressor system and use of hydrocarbon refrigerants makes the refrigeration system completely green and environmental friendly. Built with isopentane foam polyurethane insulation, which complies with European RoHS Directive.

- **Low sound level**

Sound-reducing design with optimized system eliminates high-pitch noise to reduce sound level and deliver a smoother operation

### Key Features



- **Microprocessor control system:**

- Microprocessor temperature controller, LCD temperature display, display accuracy at 0.1°C.
- Adjustable temperature setting from -10°C to -30°C
- Multiple alarm functions including high temperature alarm, low temperature alarm, sensor error alarm and power failure alarm
- Sound and flash alarm
- Alarm lasts for more than 24 hours after power failure



- **Excellent temperature-retaining ability**

High efficient insulation and double-sealing design improves temperature performance, energy efficiency and system reliability



- **Lock**

Lock latch and key lock double-lock design provides an extra level of security



- **Porthole**

Porthole design is standard



- **Recorder**

Optional chart temperature recorder available



# -30°C Biomedical Freezer (Double Doors Type)

# -30°C Biomedical Freezer (Double Doors Type)

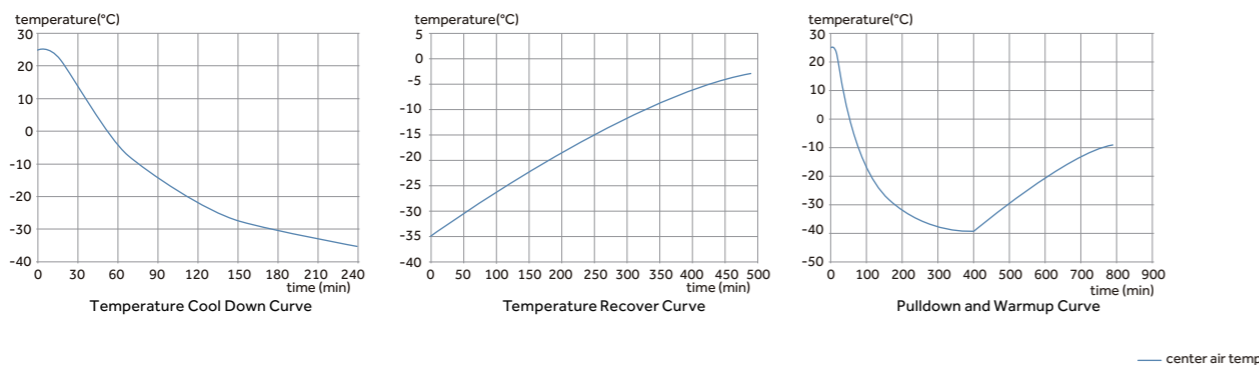
## Specifications

Model	DW-30L278		DW-30L508		
Technical Data	Cabinet Type	Upright	Upright, Double Door		
	Climate Class	SN N	SN N		
	Cooling Type	Direct Cooling	Direct Cooling		
	Defrost Mode	Manual	Manual		
	Refrigerant	HC	HC		
	Sound Level (dB(A))	40	41	43	
Performance	Cooling Performance (°C)	-30	-30		
	Temperature Range (°C)	-10--30	-10--30		
Control	Controller	Microprocessor	Microprocessor		
	Display	LCD	LCD	LED	
Electrical Data	Power Supply (V/Hz)	220-240/50	220-240/50	115/60	
	Power (W)	330	530	600	
	Electrical Current (A)	2	3	5.4	
Construction	Power Consumption (kWh/24h)	2.3	2.8	2.8	
	Capacity (L/Cu.Ft)	278/9.8	490/17.3		
	Net/Gross Weight (approx)	kg	115/135	164/200	
		lbs	253.7/297.7	361.6/440.9	
	Interior Dimension (W*D*H)	mm	520*435*1230	685*610*1228	
		in	20.5*17.1*48.4	27.0*24.0*48.3	
	Exterior Dimension (W*D*H)	mm	745*675*1810	915*810*1860	
in		29.3*26.6*71.3	36.0*31.9*73.2		
Packing Dimension (W*D*H)	mm	805*725*1970	980*905*2040		
	in	31.7*28.5*77.6	38.6*35.6*80.3		
Loading Quantities	Container Load (20'/40'/40'H)	23/46/46	12/26/26		
Alarms	High/Low Temperature	Y	Y		
	Remote Alarm	/	/	Y	
	Power Failure	Y	Y	/	
	Sensor Error	Y	Y		
	Low Battery	/	/		
	High Ambient Temperature	/	/		
	Door Ajar	/	/		
	Caster	Y	Y		
Accessories	Foot	Y	Y		
	Porthole	Y	Y		
	Drawers/Inner Doors	6/-	10/-		
	Temperature Recorder	Optional	Optional		
	USB Interface	/	/		
	RS485	/	/		
Certifications	CE	Y	Y	/	
	UL	/	/	Y	



DW-30L508

### DW-30L508 | TYPICAL PERFORMANCE CHARACTERISTICS AT 25°C AMBIENT



CCAT Scientific 0800 222 812 info@ccat.co.nz

-30°C Biomedical Freezer

-30°C Biomedical Freezer

Specifications



	Model	DW-30L278	DW-30L298J	DW-30L508	DW-30L528D	DW-30L818	DW-30L818BP	DW-30L420F	DW-30L1280F	
Technical Data	Cabinet Type	Upright	Upright	Upright, Double Door	Upright, Double Door	Upright	Upright	Upright	Upright	
	Climate Class	SN N	SN N	SNN	SNN	4	SN N	SN N	SN N	
	Cooling Type	Direct Cooling	Direct Cooling	Direct Cooling	Direct Cooling	Direct Cooling	Direct Cooling	Forced air cooling	Forced air cooling	
	Defrost Mode	Manual	Manual	Manual	Manual	Manual	Manual	Automatic (Evaporator), Manual (Inner cabinet & Door frame)	Automatic (Evaporator), Manual (Inner cabinet & Door frame)	
	Refrigerant	HC	HC	HC	HC	HC	HC	HC	HC	
	Sound Level (dB(A))	40	41	41   43	39   43	44	37 (220V/50Hz)	46	46	
Performance	Cooling Performance (°C)	-30	-30	-30	-30	-30	-30	-30	-30	
	Temperature Range (°C)	-10--30	-10--30	-10--30	-10--30	-10--30 (-35°C at 25°C Ambient Temperature)	-10--30	-10--30	-10--30	
Control	Controller	Microprocessor	Microprocessor	Microprocessor	Microprocessor	Microprocessor	Microprocessor	Microprocessor	Microprocessor	
	Display	LCD	LCD	LCD   LED	LCD	LCD	LED	LED	LED	
Electrical Data	Power Supply (V/Hz)	220-240/50	220-240/50	220-240/50   115/60	220-240/50   115/60	220-240/50	100-230/50/60	220-240/50   208-230/60	220-240/50	
	Power (W)	330	330	530   600	460   420	/	680	460/1000 (Defrost)	900W (220V/50Hz)	
	Electrical Current (A)	2	2.5	3   5.4	3.1   5	2.8	7.7	4.0/5.8 (Defrost)	4.0/5.8 (Defrost)	
	Power Consumption (kWh/24h)	2.3	/	2.8   2.8	/	/	/	4.6   5.3	5	
Construction	Capacity (L/Cu.Ft)	278/9.8	298/10.5	490/17.3	531/18.8	818/28.9	818/28.9	420/14.8	1280/45.2	
	Net/Gross Weight (approx)	kg	115/135	125/140	164/200	180/205	205/235	210/240	195/225	420/480
		lbs	253.7/297.7	275.6/308.6	361.6/440.9	396.8/451.9	451.9/518.1	463/529.1	429.9/496.0	925/1057
	Interior Dimensions (W*D*H)	mm	520*435*1230	541*443*1218	685*610*1228	704*620*1230	750*755*1460	750*755*1460	685*610*1028	1320*752*1260
		in	20.5*17.1*48.4	21.3*17.4*48.0	27.0*24.0*48.3	27.7*24.4*48.4	29.5*29.7*57.5	29.5*29.7*57.5	27.0*24.0*40.5	52/29.6/49.6
	Exterior Dimensions (W*D*H)	mm	745*675*1810	770*710*1828	915*810*1860	940*845*1878	988*951*1980	988*951*1980	950*920*1900	1520*1065*1996
in		29.3*26.6*71.3	30.3*28.0*72.0	36.0*31.9*73.2	37.0*33.3*73.9	38.9*37.4*78.0	38.9*37.4*78	37.4*36.2*74.8	59.8/41.9/78.6	
Packing Dimensions (W*D*H)	mm	805*725*1970	832*757*1992	980*905*2040	997*927*2044	/	/	980*935*2040	1570*1080*2130	
	in	31.7*28.5*77.6	32.8*29.8*78.4	38.6*35.6*80.3	39.3*36.5*80.5	/	/	38.6*36.8*80.3	61.8/42.5/83.8	
Loading Quantities	Container Load (20'/40'/40'H)	23/46/46	21/42/42	12/26/26	12/24/24	/	/	12/24/24	6/14/14	
Alarms	High/Low Temperature	Y	Y	Y	Y	Y	Y	Y	Y	
	Remote Alarm	/	Y	/   Y	Y	Y	Y	Y	Y	
	Power Failure	Y	Y	Y   /	Y	Y	Y	Y	Y	
	Sensor Error	Y	Y	Y	Y	Y	Y	Y	Y	
	Low Battery	/	N	/	N	N	Y	Y	Y	
	High Ambient Temperature	/	Y	/	Y	Y	Y	Y	Y	
	Door Ajar	/	Y	/	Y	Y	Y	Y	Y	
Accessories	Caster	Y	Y	Y	Y	Y	Y	Y	Y	
	Foot	Y	Y	Y	Y	Y	Y	Y	Y	
	Porthole	Y	Y	Y	Y	/	Y (2)	Y	Y	
	Drawers/Inner Doors	6/-	N	10/-	/	5/3	5/3	-/3   6/-	12	
	USB Interface	/	Optional	/	Optional	Optional	Optional	Y   Optional	Y	
	RS485	/	Optional	/	Optional	Y	Y	Optional	Optional	
	Temperature Recorder	Y	Optional	Y   /	Optional	/	/	/	/	
Certification	CE	/	CE	/   Y	CE   UL	Y	Y	Y   /	Y	

The Haier Biomedical -25°C biomedical freezer maximises storage space. Integrated cold shelf and evaporator design provides maximum refrigeration efficiency.



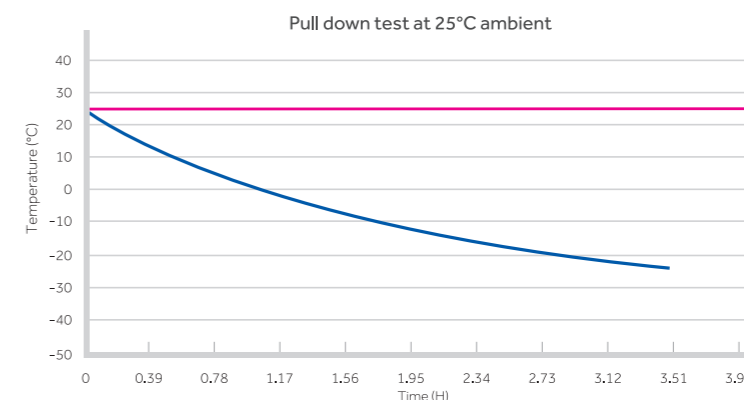
DW-25L92/262

**Key Features**

- Chemically stable, HC commercially available and environmentally safe refrigerant
- High density foam insulation for rigidity and stable storage temperature
- Microprocessor control, digital display, adjustable temperature range: -10°C~-25°C
- LED digital display for clear observation
- Wide voltage tolerance design with applicable voltage range of 187~242 V/AC

**Safety**

- Multiple malfunction alarms including high low temperature, sensor error
- Two types of alarm indications: audible buzzing and visible flashing light
- Door lock for storage safety
- Storage drawer



**Specifications**

	Model	DW-25L92		DW-25L262		
Technical Data	Cabinet Type	Upright		Upright		
	Climate Class	SN N		SN N		
	Cooling Type	Direct Cooling		Direct Cooling		
	Defrost Mode	Manual		Manual		
	Refrigerant	HC		HC		
	Sound level ((dB(A))	27	28	34	34	
Performance	Cooling Performance (°C)	-25		-25		
	Temperature Range (°C)	-10~-25		-10~-25		
Control	Controller	Microprocessor		Microprocessor		
	Display	LCD		LCD		
Electrical Data	Power Supply (V/Hz)	220-240/50	115/60	220-240/50	115/60	
	Power (W)	255	125	270	135	
	Electrical Current (A)	1.2	1.8	1.4	2.6	
	Power Consumption (kWh/24h)	0.65	0.49	0.95	0.73	
Construction	Capacity (L/Cu.Ft)	92/3.2		262/9.3		
	Net/Gross Weight (approx)	kg	46/51	88/93		
		lbs	101.4/112.4	194.0/205.0		
	Interior Dimensions (W*D*H)	mm	435*410*635	480*465*1430		
		in	17.1*16.1*25.0	18.9*18.3*56.3		
	Exterior Dimensions (W*D*H)	mm	640*610*810	700*705*1665	700*705*1730	
		in	25.2*24.0*31.9	27.6*27.8*65.6	27.6*27.8*68.1	
Packing Dimensions (W*D*H)	mm	660*700*900	775*760*1880	775*760*1890		
	in	26.0*27.6*35.4	30.5*29.9*74.0	30.5*29.9*74.4		
Loading Quantities	Container Load (20'/40'/40'H)	48/108/108		21/45/45		
Alarms	High/Low Temp	Y		Y		
	Sensor Error	Y		Y		
	Door Ajar	Y		Y		
	Remote Alarm	Y		Y		
Accessories	Caster	Y		Y		
	Foot	Y		Y		
	Porthole	Y		Y		
	Drawers	3		7		
	USB Interface	Optional	/	Optional	/	
Certifications	RS485	Optional		Optional		
	CE	Y	/	Y	/	
	UL	/	Y	/	Y	

Product appearance and specifications are subject to change with out notice